



I-49 Inner City Connector Newsletter

State Project No. H.003915
Legacy Project No. 700-09-0171

November 2013
Volume 2, Number 2
Page 1 of 3

Introduction

This newsletter provides information for the engineering and environmental studies regarding the I-49 Inner City Connector (ICC) project sponsored by the Northwest Louisiana Council of Governments (NLCOG). We are currently conducting a Stage 1 Planning and Environmental review for the I-49 ICC project. Stage 1 analyzes the potential impacts the I-49 ICC could have within the proposed construction area, inclusive of public input, and the required environmental documentation in accordance with the National Environmental Policy Act (NEPA). The ultimate objective of the project is to develop an interstate connector facility that will link the existing I-49 to the southern terminus of the future I-49 North in the vicinity of the I-220 interchange.

This second issue of the Volume 2 newsletters will provide a brief project history, a project update since the last newsletter, a description of an additional build alternative, how the public can stay involved in the study, the Stage 1 process, and an updated project map.

Project Alternatives

The Stage 0 Feasibility Study was completed in May 2010. Ten community outreach meetings occurred during the Stage 0 process. Based on public input, a 1,000-foot study corridor was developed for the potential location of the ICC. The Louisiana Department of Transportation and Development (DOTD) approved the feasibility study and allowed for the project to move forward into the Stage 1 Planning/Environmental portion of the six-stage DOTD project development process.

The project team held the first round of Community Input Meetings in December 2011, which offered the public an opportunity to provide input regarding the ICC location. The project team incorporated the public's input and designed four possible build alternatives to present to the public along with preliminary impacts at the second round of Community Impact Meetings in December 2012.

During the public involvement process the No-Build Alternative was suggested as the solution by a large number of individuals, as it utilizes LA 3132 from its interchange with I-49 as the connector. It was determined that upgrades would be necessary to consider LA 3132 a viable connector. As a result, a new build alternative, Build Alternative 5, has been added to the study. The area surrounding Build Alternative 5 will be known as the NEPA-derived study area since it falls outside the original project study area.

In This Issue

Introduction	1
Project Alternatives	1
Project Update	1
Project Website	1
Public Input Opportunities.....	2
Public Meetings.....	2
Stage 1 Process	2
Project Team.....	2
Project Map.....	3

Project Update

- Conducted second round of Community Input Meetings in December 2012. Four build alternatives, as well as the no build option, were presented along with preliminary social and environmental impacts
- Project placed on hold in February 2013 until approval to include the study of a fifth build alternative was received in October 2013

Project Website

The project website www.i49shreveport.com supports an interactive map with the ability to display the four build alternatives presented in December 2012, the recently added NEPA-derived study area associated with Build Alternative 5, and various community features. An alignment for Build Alternative 5 will be added to the map once it is developed. Approved Stage 1 documents are added to the website as we move through the process. Additionally, the Stage 0 document and issues of Stage 0 newsletters, Volume 1, can be found on the project's website. Please visit the website often for the most up to date information, to be added to mailing lists, and/or to leave your comments.



One of three second round Community Input Meetings held in December 2012



I-49 Inner City Connector Newsletter

State Project No. H.003915
Legacy Project No. 700-09-0171

November 2013
Volume 2, Number 2
Page 2 of 3

Public Input Opportunities

NLCOG, in cooperation with the project team, has developed an extensive community involvement plan for the I-49 ICC Project. Public involvement is a critical component of the project development process. Your participation is vital to ensuring that decisions on the proposed project reflect the needs of the people affected by the project. There are several ways to be informed and heard. If you have questions, comments or concerns, and want more information or want to be placed on the I-49 ICC mailing list, you can do one of the following:

- Mail-in attached Comment Form
- Via email to i49shreveport@providenceeng.com
- Visit the project website www.i49shreveport.com
- Information Line (877) 893-8295
- Attending Public Meetings

Public Meetings

Two rounds of Community Input Meetings and a Public Hearing were initially scoped to be held during the Stage 1 process. Each round of the Community Input Meetings will consist of three public meetings. The first round was held in December 2011. Attendees participated in a group exercise to assist in development of possible alternatives and community enhancement features. The second round was held in December 2012. Attendees were asked to provide input on four proposed build alternatives, as well as the no build option. The meeting materials and summaries from both rounds can be found on the Documents page of the project website.

Due to the addition of Build Alternative 5, a third round of Community Input Meetings has been added. This round will consist of five meetings and is anticipated to be held early in 2014. These meetings will incorporate all affected communities and will be held once the appropriate studies have been conducted on Build Alternative 5.

After the third round of Community Input Meetings, the project team will identify a preferred alternative to move into the next stage of the DOTD process along with the no build option. At the conclusion of the Stage 1 project, a Public Hearing will be held to receive final public comments to be included in the official record of the Environmental Impact Statement (EIS). Please check the website continually for the meeting dates, times, and locations. All interested members of the public are encouraged to attend these meetings.

Stage 1 Process

Red indicates where the project team is in the Stage 1 process:

- **Project Initiation and Scoping**
- **Public Input Meetings (Round 1)**
- **Purpose and Need (refine from Stage 0)**
- **Alternative Development**
- **Traffic Data Collection and Analysis**
- **Public Input Meetings (Round 2)**
- **Environmental Impacts**
- Public Input Meetings (Round 3)
- Alternative Screening
- Draft EIS
- Public Hearing
- Final EIS

At the end of Stage 1, the environmental study, called an EIS, will be presented to the Federal Highway Administration (FHWA) and DOTD for approval. If approved, construction typically does not begin until Stage 5 of the process.

Project Team

DOTD and **FHWA** are Lead Agencies in the development of the EIS. The Consultant Team includes:

Northwest Louisiana Council of Governments
Project Sponsor

Providence Engineering and Environmental Group LLC

Project Management, Planning, Preliminary Engineering, and Environmental

ABMB Engineers, Inc.

Traffic Engineering, Modeling, Intersection Analysis, and Design

Franklin Associates

Public Outreach and Media Relations

Earth Search, Inc.

Cultural Resources Management

T.Y. Lin International Group

Bridge Design

Bowlby & Associates, Inc.

Noise Analysis QA/QC

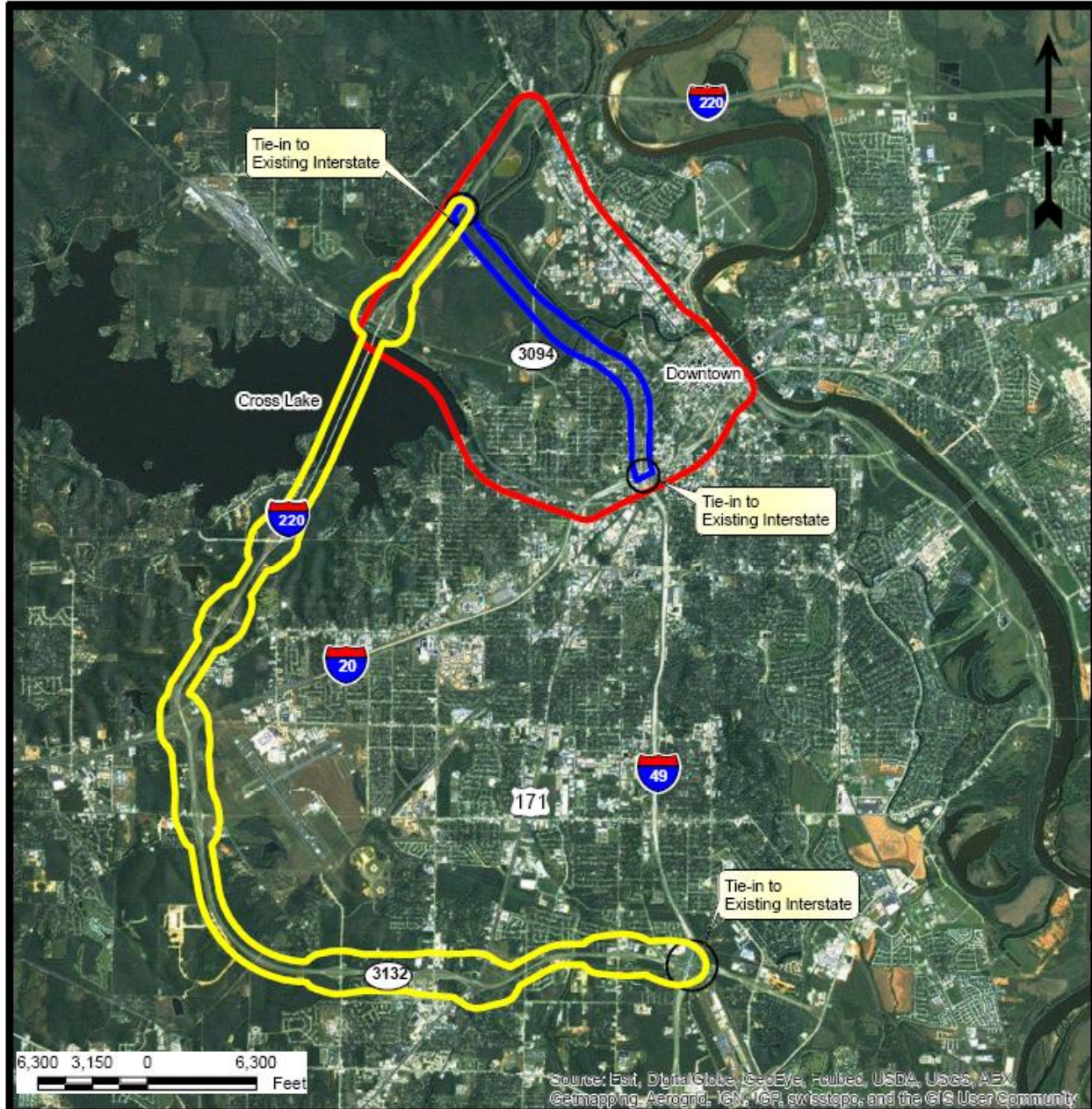


I-49 Inner City Connector Newsletter

State Project No. H.003915
Legacy Project No. 700-09-0171

November 2013
Volume 2, Number 2
Page 3 of 3

Project Area Map



Legend

- Project Study Area
- Study Corridor

Reference

Base map comprised of ESRI World Imagery Maps aerial imagery dated June 2013.



I-49 Inner City Connector

Revised Project Map
Shreveport, Caddo Parish, Louisiana

Northwest Louisiana Council of Governments



Drawn By	ECL	10/11/13
Checked By	LMH	10/11/13
Approved By	MPH	10/11/13
Project Number	489-001-001	
Drawing Number	489-001-001-A101	1 Figure

Providence Engineering and Environmental Group LLC



I-49 Inner City Connector
c/o PROVIDENCE
1201 Main Street
Baton Rouge, LA 70802

I-49 Inner City Connector Newsletter

State Project No. H.003915
Legacy Project No. 700-09-0171

COMMENT FORM

If you have questions, comments or concerns, or want to be placed on the I-49 Inner City Connector mailing list, please email us at i49shreveport@providenceeng.com or write to us at the address below. To learn more about the project, visit <http://www.i49shreveport.com> or call the information line at **(877) 893-8295**.

✉ Write to:
I-49 Inner City Connector
c/o PROVIDENCE
1201 Main Street
Baton Rouge, LA 70802

Name: _____
Address: _____
Daytime Phone: _____
Evening Phone: _____
E-Mail Address: _____

Comments: _____

